

## MARGUERITE LOUPPE: DIAGRAMMING SPACE



Marguerite Louppe  
*Nature morte jaune et grise*  
Ink, pencil, and oil pastel on paper  
17.75h x 21w in



Marguerite Louppe  
*Comptoir et vases bleus*  
Oil on canvas  
35.75 x 28.38 in.  
90.8 x 72.1 cm



Marguerite Louppe  
*Mesure à grains*  
Oil on canvas  
35.75 x 28.38 in.  
90.8 x 72.1 cm



Marguerite Louppe  
*Étude pour violon*  
Pencil on paper  
7.5 x 11 in.  
19 x 28 cm



Marguerite Louppe  
*Nature morte avec Le Figaro et un fer à cheval*  
Pencil on paper  
10 x 10 in.  
25.4 x 25.4 cm



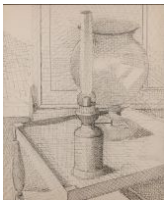
Marguerite Louppe  
*Nature morte et tricolore*  
Oil on canvas  
25.6 x 21.3 in.  
65 x 54 cm

# ROSENBERG & CO.

---



Marguerite Louppe  
*Fleurs*  
Pen on paper  
23.75h x 18w in



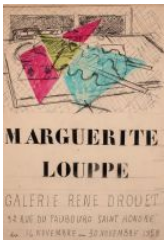
Marguerite Louppe  
*Nature morte à la lampe à huile*  
Pen on paper  
21.50h x 18w in



Marguerite Louppe  
*Nature morte au violon*  
Pen on paper  
23.50h x 18w in



Marguerite Louppe  
*Chaise alsacienne*  
Pen on paper  
24h x 19.25w in



Marguerite Louppe  
*Étude pour une affiche d'exposition pour la Galerie René Drouet, 1958*  
Ink and oil pastel on paper  
12 x 8.5 in.  
30.5 x 21.6 cm



Marguerite Louppe  
*Numéro 63*  
Oil on canvas  
21.5 x 25.6 in.  
54.5 x 65 cm

# ROSENBERG & CO.

---



Marguerite Louppe  
*Guéridon avec cotillons*  
Gouache on paper  
23h x 16w in



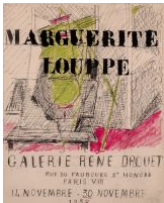
Marguerite Louppe  
*Nature morte à la table ouverte*  
Pen on paper  
19.5 x 22.5 in.  
49.5 x 57.2 cm



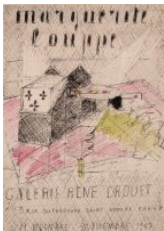
Marguerite Louppe  
*Téléphone, journal et vase*  
Oil on canvas  
28 x 36 in.  
71.1 x 91.4 cm



Marguerite Louppe  
*Nature morte au téléphone*  
Pen on paper  
19.50h x 25.50w in



Marguerite Louppe  
*Étude pour une affiche d'exposition pour la Galerie René Drouet, 1958*  
Ink and oil pastel on paper  
10.5 x 8.5 in.  
26.7 x 21.6 cm



Marguerite Louppe  
*Étude pour une affiche d'exposition pour la Galerie René Drouet, 1958*  
Ink and oil pastel on paper  
12 x 8.5 in.  
30.5 x 21.6 cm



Marguerite Louppe  
*L'éventail*  
Oil on canvas  
28.7 x 23.6 in.  
73 x 60 cm

# ROSENBERG & CO.

---



Marguerite Louppe  
*Nestor au salon*  
Oil on canvas  
31.7 x 25.6 in.  
80.5 x 65 cm



Marguerite Louppe  
*Vue de l'atelier de Maurice Brianchon*  
Oil on canvas  
31.38 x 25.25 in.  
79.7 x 64.1 cm



Marguerite Louppe  
*Dimanche à Saint Cloud*  
Oil on canvas  
23 x 31.75 in.  
58.4 x 80.6 cm



Marguerite Louppe  
*Vue des buis à Truffières*  
Oil on canvas  
32.3 x 39.6 in.  
82 x 100.5 cm



Marguerite Louppe  
*Nature morte à la théière*  
Oil on canvas  
25.6 x 31.7 in.  
65 x 80.5 cm



Marguerite Louppe  
*Nature morte aux cigarettes*  
Oil on canvas  
28.7 x 23.6 in.  
73 x 60 cm



Marguerite Louppe  
*Marguerites*  
Oil on canvas  
36 x 28.5 in.  
91.5 x 72.5 cm

# ROSENBERG & CO.

---



Marguerite Louppe  
*Vue de Truffières*  
Oil on canvas  
28.5 x 36.25 in.  
72.4 x 92.1 cm



Marguerite Louppe  
*Nature morte à la plume*  
Oil on canvas  
28.7 x 23.6 in.  
73 x 60 cm



Marguerite Louppe  
*Atelier de Maurice Brianchon avec palette*  
Oil on canvas  
25.6 x 21.3 in.  
65 x 54 cm



Marguerite Louppe  
*Bouteilles et flacons*  
Oil on canvas  
31.9 x 39.4 in.  
81 x 100 cm



Marguerite Louppe  
*Carafe et orchidée*  
Oil on canvas  
25.25 x 21 in.  
64.1 x 53.3 cm



Marguerite Louppe  
*Pot de fleurs*  
Oil on canvas  
36.2 x 28.7 in.  
92 x 73 cm



Marguerite Louppe  
*Guéridon et dessin*  
Oil on canvas  
39.4 x 31.9 in.  
100 x 81 cm

# ROSENBERG & CO.

---



Marguerite Louppe  
*Chaise, pinceaux et palette*  
Oil on canvas  
39.4 x 32 in.  
100 x 81 cm



Marguerite Louppe  
*Table basse et compotier*  
Oil on canvas  
32 x 25.4 in.  
81 x 64.5 cm



Marguerite Louppe  
*Le violon rouge*  
Oil on canvas  
31.5 x 38.75 in.  
80 x 98.4 cm



Marguerite Louppe  
*Guéridon et plante verte*  
Oil on canvas  
32 x 25.6 in.  
81 x 65 cm