

# ROSENBERG & CO.

---

## OUT FROM UNDER OUR BRUSHES 20TH CENTURY AMERICAN MODERNISM



Reuben Nakian  
*Nymph and Dolphins*, 1982–85  
Black litho crayon and color wash on paper  
29.75h x 40.75w in



Reuben Nakian  
*Nymph and Cupid*, 1982–85  
Black litho crayon with blue and green wash on paper  
29.75h x 33.13w in



Robert Keyser  
*Creek Road Farewell*, 1961  
Paper collage  
7.5 x 6 in.  
19 x 15.25 cm



Dorothy Dehner  
*People and Buildings #11*, 1949  
Watercolor and ink on paper  
18 x 22.75 in.  
45.7 x 57.8 cm



Dorothy Dehner  
*Untitled #10*, 1986  
Bronze  
11.5 x 3 x 1.5 in.  
29.2 x 7.6 x 3.8 cm



Judith Rothschild  
*Nauset Heights III.*, 1970  
Oil on canvasboard  
9 x 11.75 in.  
22.8 x 29.8 cm

# ROSENBERG & CO.

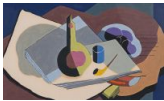
---



Morris Barazani  
*Untitled (Derek Timmerman)*, 1970s  
Collage on paper  
12.4 x 10.5 in.  
31.4 x 26.7 cm



Arthur Dove  
*Figure 4*, 1945  
Oil on canvas  
18 x 24 in.  
45.7 x 61 cm



Kenneth Stubbs  
*Still Life with Pipe and Bottle*, 1934  
Gouache on paper  
10 x 16 in.  
25.4 x 40.64 cm



Balcomb Greene  
*#10*, 1935  
Collage on paper  
7.5 x 6 in.  
19.05 x 15.24 cm



Reuben Nakian  
*Europa and the Bull*, 1979  
Bronze  
16.50h x 20w in  
4/10



George L. K. Morris  
*Rondeau*, 1948  
Watercolor and pencil on paper  
14 x 11 in.  
35.6 x 28 cm



Balcomb Greene  
*Untitled*, 1937  
Collage on paper  
7.5 x 11.25 in.  
19.05 x 28.57 cm

# ROSENBERG & CO.

---



Larry Rivers  
*Perspective drawings*, 1965  
Paper collage and mixed media on paper mounted on panel  
17 x 21 in.  
43.2 x 53.3 cm



Morris Barazani  
*Collage #16*, 1964  
Collage on paper  
13h x 13w in



Tom John  
*Untitled*, 2017  
Watercolor on paper  
12.88 x 11 in.  
32.7 x 28 cm



Tom John  
*Untitled*, 2017  
Watercolor on paper  
12.88 x 11 in.  
32.75 x 28 cm



Tom John  
*Laidley House, San Francisco*, 2001  
Gouache and pencil on paper  
17.50h x 17.50w in



Reuben Nakian  
*Voyage to Crete*, c. 1970  
Bronze  
10.5 x 14.5 x 1.25 in.  
26.7 x 36.8 x 3 cm  
Edition 1 of 9



Reuben Nakian  
*Voyage to Crete*, c. 1983  
Black litho crayon with blue and green wash on paper  
29.75h x 36.50w in

# ROSENBERG & CO.

---



Louis Ribak  
*Untitled (seated nude)*, c.1920s  
Oil on canvas  
18h x 15w in



Max Weber  
*Woman with a Purple Scarf*, 1921  
Color oil sticks on light tan wove paper  
9.50h x 6.50w in



Reuben Nakian  
*Seal*, 1922  
Bronze  
6.4 x 11 x 6.5 in.  
16.2 x 28 x 16.5 cm  
Edition AC 1 of 9



Marsden Hartley  
*Still Life with Lemons (Fruit and Tumbler)*, 1928  
Oil on composition board  
23.9 x 19.6 in.  
60.7 x 49.7 cm



Marsden Hartley  
*Still Life, Pomegranates*, 1927  
Graphite on paper  
11.5 x 14.4 in.  
29.2 x 36.6 cm



Marsden Hartley  
*Ski Signs*, c. 1939–1940  
Oil on board  
22 x 28 in.  
55.9 x 71.1 cm

# ROSENBERG & CO.

---



Paul Jenkins  
*Phenomena Right Beckons*, 2008  
Watercolor on paper  
22 x 15 in.  
55.88 x 38.1 cm



Alfred H. Maurer  
*Abstract Portraits: Man and Woman*, c. 1930–1932  
Oil on gesso board  
21.25 x 18.1 in.  
54 x 46 cm



Hans Burkhardt  
*Figures*, 1950  
Colored chalk on paper  
23h x 17w in



Dorothy Dehner  
*Sand Blow #69*, 1951  
Watercolor and ink on paper  
15.75 x 20.5 in.  
40 x 57 cm



Dorothy Dehner  
*Burst #5*, 1953  
Watercolor and ink on paper  
15.75 x 20.5 in.  
40 x 52 cm



John D. Graham  
*Still Life with Saw*, 1925  
Oil on canvas  
14.1 x 17 in.  
35.8 x 43.2 cm



Hans Burkhardt  
*Untitled*, 1937  
Charcoal on paper  
17.4 x 23.9 in.  
44 x 60.6 cm

# ROSENBERG & CO.

---



Alfred H. Maurer  
*Cubist Still Life with Pear*, c. 1930–1932  
Oil on gesso board  
18 x 21.5 in.  
45.7 x 54.6 cm



Derek Uhlman  
*DUOLITH #6*, 1995  
Alabaster  
15h x 15w x 6d in



Jeffrey Wasserman  
*Untitled*, c. 1980  
Oil on paper  
24.5 x 19.5 in.  
62.23 x 49.53 cm



Theodoros Stamos  
*Infinity Field, Lefkada Series #11*, 1970  
Acrylic on paper  
30.5 x 22.25 in.  
77.47 x 56.52 cm



Conrad Marca-Relli  
*Standing Figure*, 1954  
Collage and gouache on board  
28 x 22 in.  
71.1 x 55.9 cm



Beatrice Mandelman  
*Untitled*, c. 1960s  
Collage on cardboard  
23.88h x 17.88w in



Esphyr Slobodkina  
*Diagonal Planes*, 1948  
Media collage on card  
5 x 7 in.  
12.7 x 17.8 cm

# ROSENBERG & CO.

---