

## A CENTURY ON PAPER



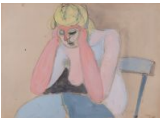
Fernand Léger  
*Composition d'éléments mécaniques*, c. 1930  
Mixed media and ink on paper  
10.43 x 9.06 in.  
26.49 x 23.01 cm



Donald Hamilton Fraser  
*Untitled*, c. 1968  
Collage on paper  
9.5 x 12 in.  
24 x 30.5 cm



Henry Valensi  
*Les Casbahs du Haut Atlas (étude n°2)*, 1931  
Watercolor and pencil on paper  
9.8 x 13 in.  
25 x 33 cm



Jean Hélion  
*Femme accoudée*, 1946  
Ink, pencil, and gouache on paper  
10.63 x 14.57 in.  
27 x 37 cm



Peter Kinley  
*Standing Figure (II)*, 1960  
Oil on paper laid on card  
10 x 7.5 in.  
25.5 x 19 cm



André Derain  
*Nu debout de face*, c. 1937-40  
Pastel on thin grey cardboard  
18.9 x 12.1 in.  
48 x 30.8 cm

# ROSENBERG & CO.

---



Jacques Villon  
*Renee de trois quarts*, 1911  
Charcoal on paper  
24.7 x 18.8 in.  
62.7 x 47.7 cm



Marino Marini  
*Petite Pomone*, 1943  
Tempera and ink on cardboard  
15.75 x 11.8 in.  
40 x 30 cm



Aristide Maillol  
*Dina de face*, 1940  
Pastel on paper  
10.5 x 17.25 in.  
26.7 x 43.8 cm



Henry Moore  
*Seated Nude*, 1929  
Pen, ink, charcoal, chalk, and wash on paper  
16.89 x 13.31 in.  
42.9 x 33.8 cm



Henry Moore  
*Three Heads*, 1979  
Crayon, watercolor, gouache, and pen on paper  
9 x 7 in.  
22.9 x 17.75 cm



Maurice Brianchon  
*Étude pour 'Nu aux bas rouges'*, c. 1958  
Watercolor and pencil on paper  
12.25 x 16 in.  
31 x 40.6 cm

# ROSENBERG & CO.

---



Giacomo Manzù  
*Figura Sdraiata*, c. 1970  
Oil Charcoal on Paper  
11.5 x 8.5 in.  
21.2 x 21.6 cm



Frank Dobson  
*Two Women*, 1943  
Mixed media on paper  
12.25 x 16 in.  
31.1 x 40.64 cm



Morris Barazani  
*Untitled (Derek Timmerman)*, 1970s  
Collage on paper  
12.4 x 10.5 in.  
31.4 x 26.7 cm



Morris Barazani  
*Collage #16*, 1964  
Collage on paper  
13 x 13 in.  
33 x 33 cm



Christo Javacheff  
*Project for a Temporary Wall of Oil Drums Rue Visconti Paris VI*, 1961  
Mixed media collage  
11.8 x 19.1 in.  
30 x 48.5 cm



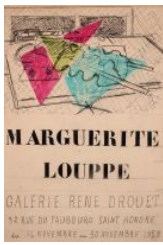
Oleg Kudryashov  
*Construction (Plates 1857, 1858, 1859)*, 1989  
Drypoint and watercolor on paper  
28 x 17 x 9 in.  
71.1 x 43.2 x 22.9 cm



Marguerite Louppe  
*Étude pour une affiche d'exposition pour la Galerie René Drouet*, 1958  
Ink and oil pastel on paper  
12 x 8.5 in.  
30.5 x 21.6 cm

# ROSENBERG & CO.

---



Marguerite Louppe  
*Étude pour une affiche d'exposition pour la Galerie René Drouet, 1958*  
Ink and oil pastel on paper  
12 x 8.5 in.  
30.5 x 21.6 cm



Beatrice Mandelman  
*Untitled, 1960s*  
Collage and ink on paper  
7 x 14 in.  
17.8 x 35.5 cm



Fernand Léger  
*Fêtes de la faim, 1948*  
Gouache and watercolor on paper  
12.9 x 9.75 in.  
32.7 x 24.8 cm



Léopold Survage  
*La ville, feuilles et main, 1931*  
Gouache on paper  
18.9 x 23.6 in.  
48 x 60 cm



Marie Laurencin  
*Portrait de femme, 1905*  
Crayon and gouache on paper  
6.3 x 4.7 in.  
16 x 12 cm



Paul Éluard  
*Le cirque (Triptyque), 1913*  
Oil pastel on mat paper on canvas  
29.5 x 13.6 in.  
75 x 34.5 cm

# ROSENBERG & CO.

---



Henri Laurens  
*Aphrodite et Sélééné*, 1950  
Collage and gouache with highlights of white chalk on paper  
13.8 x 10.4 in.  
35.05 x 26.42 cm



Henri Laurens  
*Zeus et Hermès*, 1950  
Collage and gouache with highlights of white chalk on paper  
13.7 x 10.4 in.  
34.8 x 26.42 cm



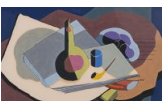
Kenneth Stubbs  
*Geometric Still Life*, c. 1954  
Casein on paper  
8 x 4.5 in.  
20.32 x 11.43 cm



Graham Sutherland  
*Study for Firebird*, 1975  
Gouache on paper  
25.2 x 19.3 in.  
64 x 49 cm



Jean Lurçat  
*Le ruisseau*, 1930  
Gouache on paper  
27.6 x 20.5 in.  
70 x 52 cm



Kenneth Stubbs  
*Still Life with Pipe and Bottle*, 1934  
Gouache on paper  
10 x 16 in.  
25.4 x 40.64 cm

# ROSENBERG & CO.

---



Jeffrey Wasserman  
*Untitled*, c. 1985  
Oil on paper  
30 x 22.25 in.  
76.2 x 56.52 cm



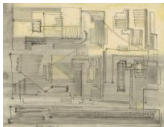
Bernard Meadows  
*Two Fallen Birds*, 1960  
Graphite and watercolor on paper laid on card  
8.25 x 10.75 in.  
21 x 27.3 cm



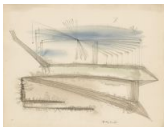
Jean Lurçat  
*Les baigneuses*, 1933  
Gouache on paper  
18.1 x 14.2 in.  
46 x 36 cm



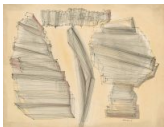
Dorothy Dehner  
*Burst #5*, 1953  
Watercolor and ink on paper  
15.75 x 20.5 in.  
40 x 52 cm



Dorothy Dehner  
*Untitled #53*, 1951  
Watercolor and ink on paper  
17.75 x 22.5 in.  
45 x 57 cm



Dorothy Dehner  
*Untitled #63*, 1950  
Watercolor and ink on paper  
15.75 x 20.25 in.  
40 x 51 cm



Dorothy Dehner  
*People and Buildings #11*, 1949  
Watercolor and ink on paper  
18 x 22.75 in.  
45.7 x 57.8 cm

# ROSENBERG & CO.

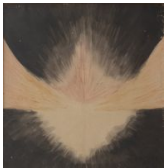
---



Albert Gleizes  
*Portrait de Florent Schmitt*, 1915  
Ink and gouache on paper  
10.63 x 7.87 in.  
27 x 20 cm



Giacomo Balla  
*Forze spaziali (Project for a lampshade)*, c. 1920  
Tempera on cardboard  
4.5 x 14.5 in.  
11.5 x 37 cm



Léopold Survage  
*Rythme colore*, 1918  
Watercolor and ink on paper  
12.75 x 12.5 in.  
32.4 x 31.75 cm



Jean Crotti  
*Prière Bolcheviki*, 1920  
Gouache on paper  
24 x 18.5 in.  
61 x 47 cm



Graham Sutherland  
*Project for Coventry*, 1950  
Mixed media on paper  
6.5 x 9.5 in.  
16.5 x 24.13 cm



Henri Hayden  
*Vue sur le canal*, c. 1913  
Watercolor and pencil on paper  
10.6 x 14.5 in.  
27 x 36.7 cm



Juan Gris  
*Bouquet de fleurs*, c. 1920  
Graphite on paper  
10.3 x 8.2 in.  
26.2 x 20.7 cm

# ROSENBERG & CO.

---



Henri Hayden  
*Nature morte au compotier*, 1920  
Oil and gouache on paper  
10.25 x 11.6 in.  
26 x 29.5 cm