

## "FROM A PASSING SHAPE": MODERNIST WORKS ON PAPER



Oleg Kudryashov  
*Construction (Plate 552)*, 1983  
Drypoint on paper  
16 x 12 x 5 in.  
40.6 x 30.48 x 12.7 cm



Lynn Chadwick  
*Composition*, 1961  
Acrylic, watercolor, and ink on paper  
25.5 x 18 in.  
64.8 x 45.7 cm



Marsden Hartley  
*Still Life, Pomegranates*, 1927  
Graphite on paper  
11.5 x 14.4 in.  
29.2 x 36.6 cm



Giacomo Balla  
*Forze spaziali (Project for a lampshade)*, c. 1920  
Tempera on cardboard  
4.5 x 14.5 in.  
11.5 x 37 cm



Léopold Survage  
*Composition aux personnages*, 1962  
Black ink on paper  
14.2 x 17.2 in.  
36 x 45 cm



Morris Barazani  
*Untitled (Derek Timmerman)*, 1970s  
Collage on paper  
12.4 x 10.5 in.  
31.4 x 26.7 cm

# ROSENBERG & CO.

---



Louis Marcoussis  
*Nature morte cubiste*, 1915  
Watercolor and gouache on paper  
12.2 x 8.7 in.  
31 x 22 cm



André Derain  
*Nu debout de face*, c. 1937–40  
Pastel on thin grey cardboard  
18.9 x 12.1 in.  
48 x 30.8 cm



Léopold Survage  
*Nature morte au compotier*, c. 1919  
Pencil on paper  
8.27 x 8.27 in.  
21 x 21 cm



Julius Bissier  
*Composition*, 1963  
Watercolor on paper  
9.60h x 12.40w in



Julius Bissier  
*2.Dez.61*, 1961  
Tempera on canvas  
10h x 11w in



Larry Rivers  
*Perspective drawings*, 1965  
Paper collage, graphite, and enamel spray on paper mounted on panel  
17 x 21 in.  
43.2 x 53.3 cm



Robert Marc  
*Cubist Composition*, c. middle - late 20th century  
Mixed media  
12.50h x 24w in

# ROSENBERG & CO.

---



César Domela  
*Composition*, 1949  
Tempera on paper  
24.8 x 19.69 in.  
63 x 50 cm



Auguste Herbin  
*Untitled*, 1926  
Pencil, gouache, and watercolor on paper  
8.45 x 11.2 in.  
21.5 x 28.5 cm



Balcomb Greene  
*#10*, 1935  
Collage on paper  
7.5 x 6 in.  
19.05 x 15.24 cm



Jean Lurçat  
*Feuille et mante religieuse*, c. 1950  
Gouache and crayon on paper  
9.5 x 8.25 in.  
24.1 x 21 cm



Jean Lurçat  
*"Tortue des Ardennes,"*  
*Original drawing for the book "Géographie animale," André Gonin, Lausanne 1948,*  
1948  
Gouache and crayon on paper  
13 x 10 in.  
33 x 25.4 cm



Jean Lurçat  
*"Fourmilier des Capucines,"*  
*Original drawing for the book "Géographie animale," André Gonin, Lausanne, 1948,*  
1948  
Gouache and crayon on paper  
11.5 x 8.5 in.  
29.2 x 21.6 cm



Jean Lurçat  
*Tortue*, c. 1950  
Gouache and crayon on paper  
15.5 x 18.5 in.  
39.3 x 47 cm

# ROSENBERG & CO.

---



George L. K. Morris  
*Rondeau*, 1948  
Watercolor and pencil on paper  
14h x 11w in



Henry Valensi  
*Les Casbahs du Haut Atlas (étude n°2)*, 1931  
Watercolor and pencil on paper  
9.8 x 13 in.  
25 x 33 cm



Henri Laurens  
*Aphrodite et Sélééné*, 1950  
Collage and gouache with highlights of white chalk on paper  
13.8 x 10.4 in.  
35.05 x 26.42 cm



Henri Laurens  
*Zeus et Hermès*, 1950  
Collage and gouache with highlights of white chalk on paper  
13.7 x 10.4 in.  
34.8 x 26.42 cm



Otto Gutfreund  
*Nature morte*, c. 1920–24  
Graphite on paper  
7.70h x 10w in



Juan Gris  
*Bouquet de fleurs*, c. 1920  
Graphite on paper  
10.31 x 8.15 in.  
26.2 x 20.7 cm



Renato (René) Paresce  
*Natura morta*, 1926  
Pencil on paper  
14.8 x 16.85 in.  
37.6 x 42.8 cm

# ROSENBERG & CO.

---



Jean Lurçat  
*Feuilles et papillon*, c. 1950  
Gouache on paper  
11.22 x 9.06 in.  
28.5 x 23 cm



Kenneth Stubbs  
*Geometric Still Life*, c. 1954  
Casein on paper  
8 x 4.5 in.  
20.32 x 11.43 cm



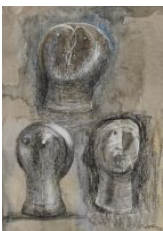
Giacomo Manzù  
*Cestino*, 1984  
Gilt bronze  
19.7 x 13.4 x 6.3 in.  
50 x 34 x 16 cm



Jean Hélion  
*Composition abstraite*, 1936  
Watercolor and India ink on paper  
9.88 x 9.25 in.  
25.08 x 23.5 cm



Georges Valmier  
*Personnage debout*, 1920  
Gouache and collage on paper  
10.6 x 8.25 in.  
27 x 20.9 cm



Henry Moore  
*Three Heads*, 1979  
Crayon, watercolor, gouache, and pen on paper  
9 x 7 in.  
22.9 x 17.75 cm

# ROSENBERG & CO.

---



Fernand Léger  
*Composition d'éléments mécaniques*, c. 1930  
Mixed media and ink on paper  
10.43 x 9.06 in.  
26.49 x 23.01 cm



Henri Hayden  
*Nature morte au compotier*, 1920  
Oil and gouache on paper  
10.25h x 11.60w in



Joseph Csáky  
*Imbrication de cônes*, 1920  
Gouache and India ink on brown paper  
12.1 x 9.8 in.  
30.73 x 24.89 cm



Graham Sutherland  
*Study for Three Forms*, 1979  
Gouache and pencil on paper  
13.45 x 15.3 in.  
34.2 x 38.8 cm



Albert Gleizes  
*Portrait de Florent Schmitt*, 1915  
Ink and gouache on paper  
10.63 x 7.87 in.  
27 x 20 cm



Gino Severini  
*Studio per natura morta con violino*, 1946  
Watercolor on paper  
10.63 x 14.5 in.  
26.99 x 36.83 cm



Serge Férat  
*Nature morte à la cafetière à la guitare*, c. 1918  
Gouache on paper  
12.24 x 8.27 in.  
31.09 x 21.01 cm

# ROSENBERG & CO.

---



Joseph Csáky  
*Composition cubist*, 1919  
India ink and watercolor on paper  
13.4 x 10 in.  
34.04 x 25.4 cm



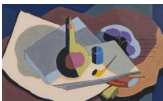
Jean Lurçat  
*Nature morte au coquillage*, 1923  
Gouache on paper  
18.31h x 12.60w in



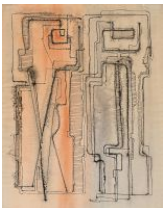
Robert Keyser  
*Untitled*, 1959  
Mixed media  
5 x 4 in.  
12.7 x 10.2 cm



Robert Keyser  
*Creek Road Farewell*, 1961  
Paper collage  
7.5 x 6 in.  
19 x 15.25 cm



Kenneth Stubbs  
*Still Life with Pipe and Bottle*, 1934  
Gouache on paper  
10 x 16 in.  
25.4 x 40.64 cm



Dorothy Dehner  
*Man & Woman*, 1950  
Gouache and ink on paper  
23 x 18 in.  
58.4 x 45.7 cm

# ROSENBERG & CO.

---



Sergio de Castro  
*L'atelier Gris*, 1967  
Gouache on paper  
20.47 x 24.21 in.  
52 x 61.5 cm



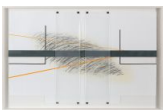
Graham Sutherland  
*Study for Firebird*, 1975  
Gouache on paper  
25.20h x 19.29w in



Oleg Kudryashov  
*Construction (Plates 1857, 1858, 1859)*, 1989  
Drypoint and watercolor on paper  
28h x 17w x 9d in



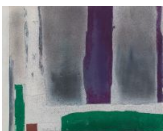
Theodoros Stamos  
*Infinity Field, Lefkada Series #II*, 1970  
Acrylic on paper  
30.5 x 22.25 in.  
77.47 x 56.52 cm



Ann Christopher  
*Following Lines 4*, 2016  
Mixed media  
25.4 x 40 in.  
64.52 x 101.6 cm  
Unique



Agustín Cárdenas  
*Untitled*, 1960s  
China ink on heavy paper  
25.5 x 19 in.  
64.75 x 48.25 cm



Esteban Vicente  
*Untitled*, 1980  
Collage and gouache on paper  
21 x 25.5 in.  
53.34 x 64.77 cm



# ROSENBERG & CO.

---